



RiHUNIK

SPRING / SUMMER
2024

WOMAN





IMBOTTITURA-SORONA
PADDING-SORONA

ENJOY NATURE WHILE WEARING BREATHABLE,
RELIABLE PADDING CLOTHING.



BREATHABLE AND LIGHT-WEIGHT



It's breathable and retains warmth with less filling and weight, creating a more comfortable garment.

SUSTAINABLE



It's partially plant based which reduces its impact on the environment and certified by the Sorona® Common Thread Fabric Certification Program to ensure the origin and the high-performance standards of this innovative, sustainably sourced insulation.

LONG-LASTING



It maintains its loft wash after wash, so you can look good and stay warm day after day.

LOOK GOOD, FEEL GOOD, DO GOOD

WITH



sorona
AURA

GODIAMOCI LA NATURA INDOSSANDO INDUMENTI CON IMBOTTITURE TRASPIRANTI E AFFIDABILI



TRASPIRANTE E LEGGERA



È traspirante e trattiene il calore con meno imbottitura e peso, creando un capo più confortevole.

SOSTENIBILE



È parzialmente a base vegetale che riduce il suo impatto sull'ambiente ed è certificato dal Programma di certificazione dei tessuti a filo comune Sorona® per garantire l'origine e gli standard ad alte prestazioni di questo isolamento innovativo e sostenibile.

DUREVOLE



Mantiene la sua morbidezza, lavaggio dopo lavaggio, così il capo può avere un bell'aspetto e tenerti al caldo giorno dopo giorno.

LOOK GOOD, FEEL GOOD, DO GOOD

WITH



sorona
AURA





**CAPOSPALLA
JACKETS**

RHUNIK

PIUMINO SCIANCRATO, LEGGERO E REVERSIBILE. TRAPUNTATO CON GIOCHI DI CUCITURA SU NYLON LUCIDO E LISCIO CON TASCHE INVISIBILI SU NYLON OPACO.

FITTED DOWN JACKET, LIGHT AND REVERSIBLE. QUILTED WITH STITCHING EFFECTS ON SMOOTH SHINY NYLON AND INVISIBLE POCKETS ON MATT NYLON.

CODE STYLE-RIW182J
STYLE-SALLY REV
CODE FABRIC-F0109
FABRIC- TWO TONES NYLON
COMPOSITION-100%NY 100%PL

SMS IS IN S SIZE

SIZE- XS S M L XL XXL

REVERSIBLE



COL: 048 LIGHT BLUE POWDER

COL: 064 CITRUS

COL: 056 RASPBERRY ROSE

RIHUNIK

PIUMINO LINEA SVASATA, LEGGERO E REVERSIBILE. TRAPUNTATO CON GIOCHI DI CUCITURA SU NYLON LUCIDO E LISCIO CON TASCHE A FILETTO SU NYLON OPACO. MANICA A 3/4. CAPPuccio STACCABILE.

FLARED DOWN JACKET, LIGHT AND REVERSIBLE. QUILTED WITH STITCHING EFFECTS ON SMOOTH SHINY NYLON AND WELT POCKETS ON MATT NYLON. 3/4 LENGTH SLEEVES AND DETACHABLE HOOD.

**CODE STYLE-RIW183J
STYLE-THEA REV**

**CODE FABRIC-F0109
FABRIC- TWO TONES NYLON
COMPOSITION-100%NY 100%PL**

SMS IS IN S SIZE

SIZE- (XS) (S) (M) (L) (XL) (XXL)

REVERSIBLE



COL: 048 LIGHT BLUE POWDER

COL: 064 CITRUS

COL: 056 RASPBERRY ROSE

GIUBBINO LINEA DIRITTA, LEGGERO E REVERSIBILE. LISCIO DA ENTRAMBI I LATI. CON TASCHE INVISIBILI SU NYLON LUCIDO E TASCHE A FILETTO SU NYLON OPACO. MANICA CORTA. COLLO A FASCETTA.
STRAIGHT FIT JACKET, LIGHT AND REVERSIBLE. SMOOTH ON BOTH SIDES WITH INVISIBLE POCKETS ON SHINY NYLON AND WEFT POCKETS ON MATT NYLON. SHORT SLEEVE. STAND UP COLLAR.

CODE STYLE-RIW184J
STYLE-REANNA REV

CODE FABRIC-F0109
FABRIC- TWO TONES NYLON
COMPOSITION-100%NY 100%PL

SMS IS IN S SIZE

SIZE- XS S M L XL XXL

REVERSIBLE



COL: 048 LIGHT BLUE POWDER

COL: 064 CITRUS

COL: 056 RASPBERRY ROSE

RiUNIK

SCEGLI IL MODELLO, TRA I DUE REVERSIBILI, CHE TI PIACE DI PIU' E ABBINALO
A UNO DEI SEGUENTI CAPI:
RIW185J, RIW86J, RIW187J, RIW188J, E RIW189J.
CHOOSE THE STYLE FROM THE TWO REVERSIBLES THAT YOU LIKE THE MOST, MIX
& MATCH WITH ONE OF THE GARMENTS BELOW:
RIW185J, RIW86J, RIW187J, RIW188J, E RIW189J.

REVERSIBLE



RIW 182J SALLY REV

+



=



RIW 183J THEA REV

+



=



RIHUNIK

**SCEGLI IL MODELLO, TRA I DUE REVERSIBILI, CHE TI PIACE DI PIU' E ABBINALO
A TUTTI I CAPI DI COLLEZIONE ECCETTO ARIMA6J E ARIMA7J
CHOOSE THE STYLE FROM THE TWO REVERSIBLES THAT YOU LIKE THE MOST, MIX
& MATCH WITH ONE OF THE COLLECTION GARMENTS EXCEPT
PER STYLE ARIMAJ AND ARIMA7J.**

REVERSIBLE



+



=



RIW 184J REANNA REV

RIHUNIK

CAPOSPALLA ISPIRAZIONE IMPERMEABILE DALLA VESTIBILITA' REGOLARE.
TASCHE A FILETTO E REGOLABILE IN LARGHEZZA SUL FONDO MANICA. TES-
SUTO NYLON TECNICO ACCOPPIATO E STRETCH.
TRENCH INSPIRED JACKET, REGULAR FIT. WELT POCKETS AND ADJUSTABLE
WIDTH ON SLEEVE BOTTOM. TECHNICAL NYLON BONDED WITH STRETCH
FABRIC.

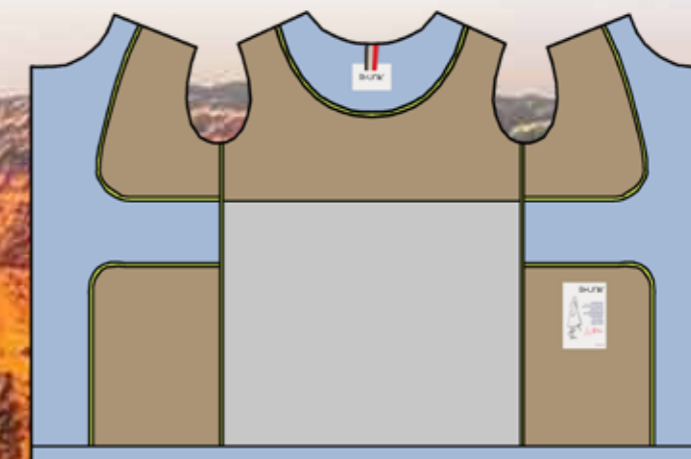
CODE STYLE-RIW185J
STYLE-ZOLA

CODE FABRIC-F0111
FABRIC- SURFLEX FABRIC
COMPOSITION-88%NY 12%EA

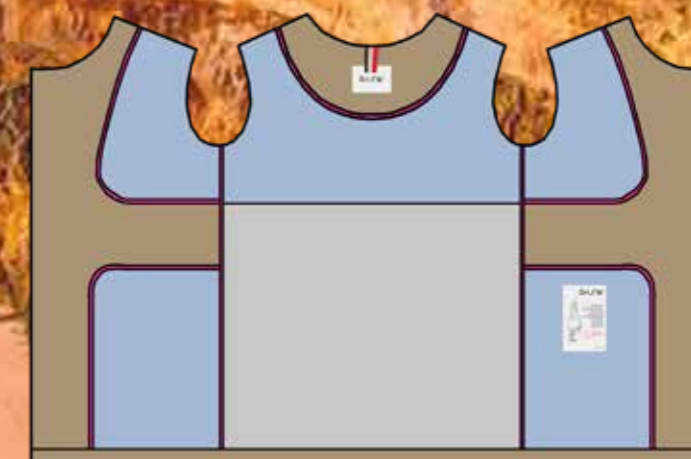
SMS IS IN S SIZE

SIZE- XS S M L XL XXL

STRETCH



COL: 048 LIGHT BLUE POWDER



COL: 057 LIGHT PIPE



COL: 038 SAILOR BLUE

COL: 048 LIGHT BLUE POWDER

COL: 057 LIGHT PIPE

COL: 038 SAILOR BLUE

RiUNIK

CAPOSPALLA VESTIBILITA' COMODA, TASCHE A FILETTO, CAPPUCIO CON GIOCO DI PASSAGGIO COULISSE E MANICHE RAGLAN. TESSUTO NYLON TECNICO ACCOPPIATO E STRETCH.

EASY FIT JACKET, WELT POCKETS, HOOD WITH DRAWSTRING EYELET PASSAGE EFFECT AND RAGLAN SLEEVES. TECHNICAL NYLON BONDED WITH STRETCH FABRIC.

CODE STYLE-RIW186J
STYLE-WENDY

CODE FABRIC-F0111
FABRIC- SURFLEX FABRIC
COMPOSITION-88%NY 12%EA

SMS IS IN S SIZE

SIZE- XS S M L XL XXL

STRETCH



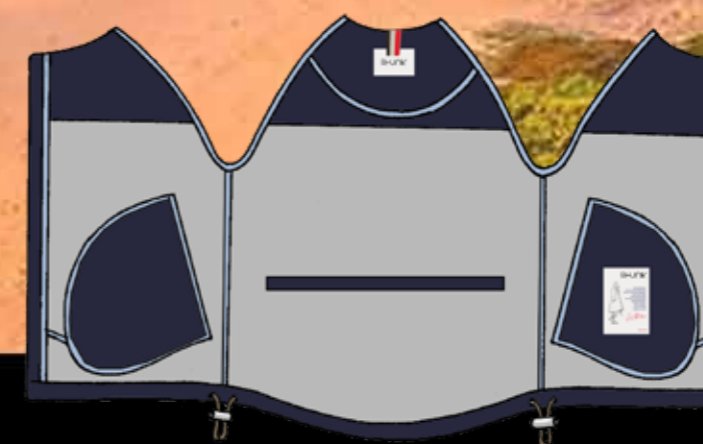
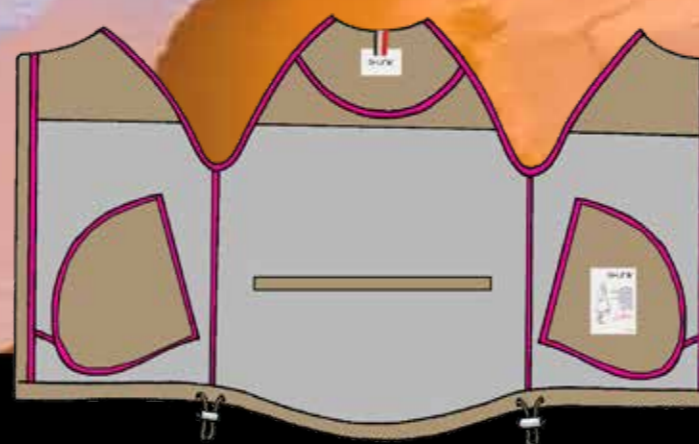
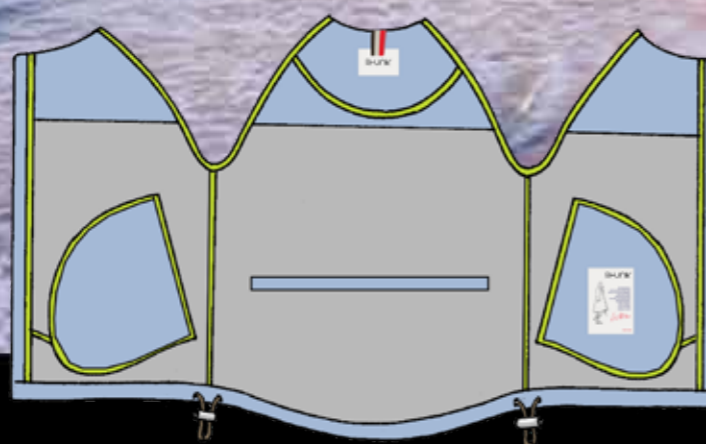
COL: 048 LIGHT BLUE POWDER



COL: 057 LIGHT PIPE



COL: 038 SAILOR BLUE



RIHUNIK

**CAPPA VESTIBILITA' COMODA, TASCHE A FILETTO E COLLO CON COULISSE.
TESSUTO NYLON TECNICO ACCOPPIATO E STRETCH.
EASY FIT CAPE, WELT POCKETS AND DRAWSTRING COLLAR. TECHNICAL
NYLON BONDED WITH STRETCH FABRIC.**

**CODE STYLE-RIW187J
STYLE-VERA**

SMS IS IN S SIZE

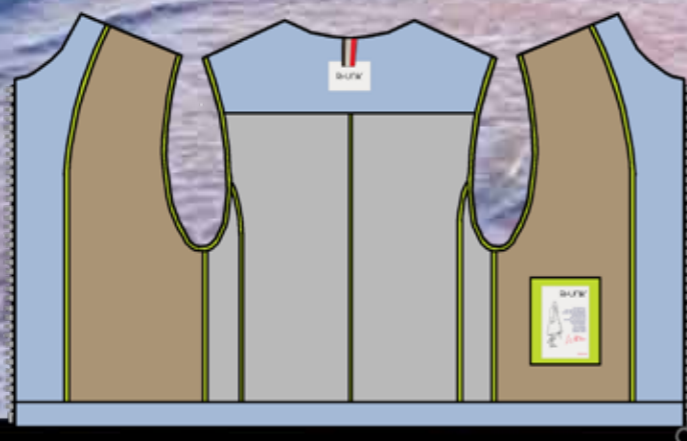
SIZE- XS S M L XL XXL

**CODE FABRIC-F0111
FABRIC- SURFLEX FABRIC
COMPOSITION-88%NY 12%EA**

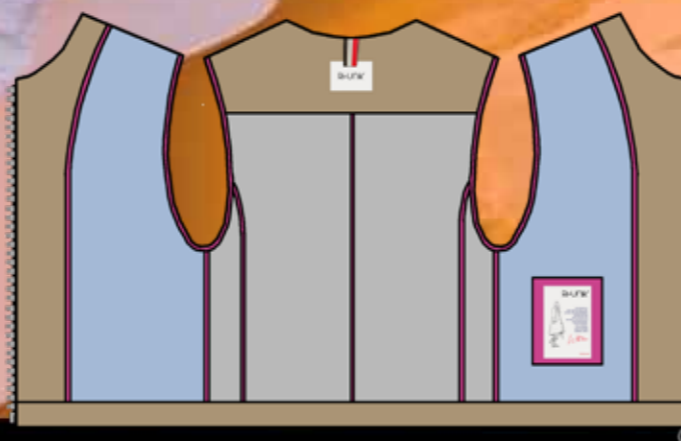
STRETCH



COL: 048 LIGHT BLUE POWDER



COL: 057 LIGHT PIPE



COL: 038 SAILOR BLUE



RiUNIK

GIUBBINO SFODERATO VESTIBILITA' CONFORTEVOLE. TASCHE A FILETTO. REGOLABILE IN LARGHEZZA SUL FONDO. TESSUTO NYLON EFFETTO STROPICCIATO. COMFORT FIT UNLINED JACKET. WELT POCKETS AND ADJUSTABLE WIDTH ON GARMEN BOTTOM. WRINKLED TWO TONE NYLON FABRIC.

CODE STYLE-RIW188J
STYLE-TRIX

CODE FABRIC-F0112
FABRIC- 2 TONES CRINKLE
COMPOSITION-100%NY

SMS IS IN S SIZE

SIZE- XS S M L XL XXL

NO-IRON

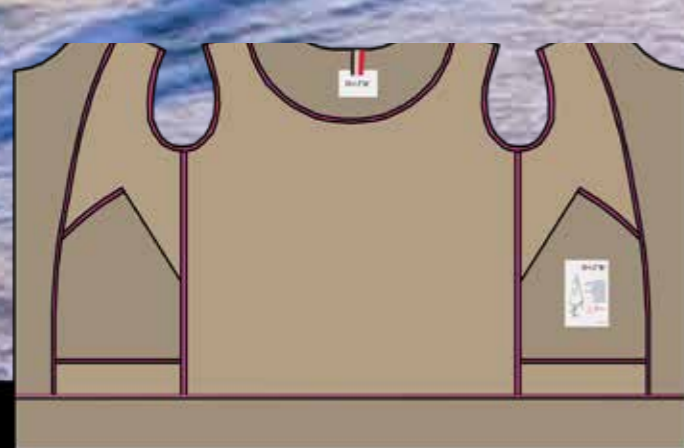


COL: 057 LIGHT PIPE

COL: 056 RASPERY ROSE

COL: 038 SAILOR BLUE

COL: 066 MILITARY OLIVE



RIUNIK

GIUBBINO SFODERATO DALLA VESTIBILITA' CONFORTEVOLE. CON CAPPuccio, TASCHE INVISIBILI E CUCITURE ARRICCIATE. REGOLABILE IN LARGHEZZA SUL FONDO. TESSUTO NYLON STROPICCIATO.

COMFORT FIT UNLINED JACKET. WITH HOOD, INVISIBLE POCKETS AND GATHERED STITCHING. ADJUSTABLE WIDTH ON BOTTOM. WRINKLED TWO TONE NYLON FABRIC.

CODE STYLE-RIW189J
STYLE-ROS

CODE FABRIC-F0112
FABRIC- 2 TONES CRINKLE
COMPOSITION-100%NY

SMS IS IN S SIZE

SIZE- XS S M L XL XXL

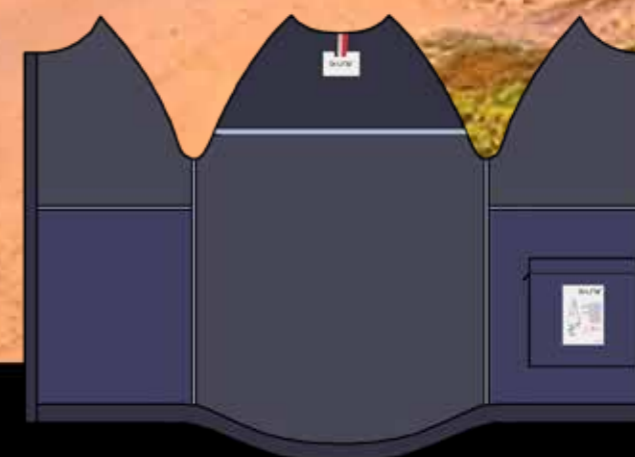
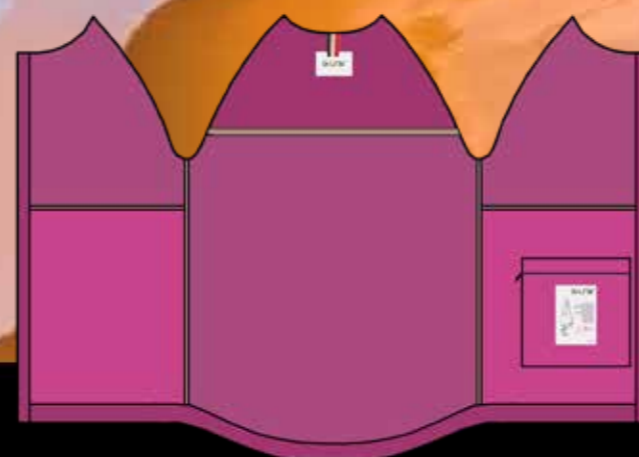
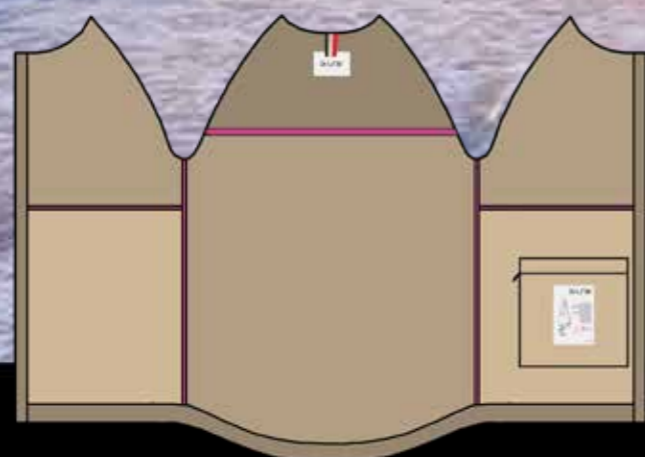
NO-IRON



COL: 057 LIGHT PIPE

COL: 056 RASPBERRY ROSE

COL: 038 SAILOR BLUE



RHUNIK

CAPOSPALLA LEGGERMENTE IMBOTTITO DI MEDIA LUNGHEZZA E VESTIBILI-
LITA' REGOLARE. REGOLABILE IN LARGHEZZA IN VITA, TASCHE A FILETTO E
ABBOTTONATURA NASCOSTA. TESSUTO NYLON STROPICCIATO.
SLIGHTLY PADDED MEDIUM LENGTH JACKET, REGULAR FIT. ADJUSTABLE
WAIST, WELT POCKETS AND HIDDEN BUTTONS. WRINKLED TWO TONE
NYLON FABRIC.

CODE STYLE-RIW190J
STYLE-VIOLET

CODE FABRIC-F0112
FABRIC- 2 TONES CRINKLE
COMPOSITION-100%NY

SMS IS IN S SIZE

SIZE- XS S M L XL XXL

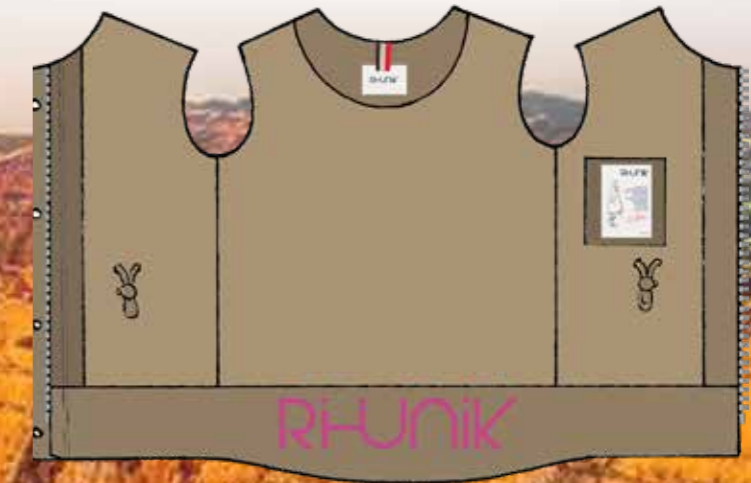
NO-IRON



COL: 057 LIGHT PIPE

COL: 038 SAILOR BLUE

COL: 066 MILITARY OLIVE



COL: 057 LIGHT PIPE



COL: 038 SAILOR BLUE



COL: 038 SAILOR BLUE

RiUNIK

CAPOSPALLA ISPIRAZIONE IMPERMEABILE DALLA VESTIBILITA' REGOLARE.
TASCHE A FILETTO E REGOLABILE IN LARGHEZZA SUL FONDO MANICA. TES-
SUTO BATTUTO IN MISCHIA DI COTONE NYLON.

TRENCH INSPIRED JACKET, REGULAR FIT. WELT POCKETS AND ADJUSTABLE
WIDTH ON SLEEVE BOTTOM. COMPACT FABRIC IN A MIX OF COTTON NYLON.

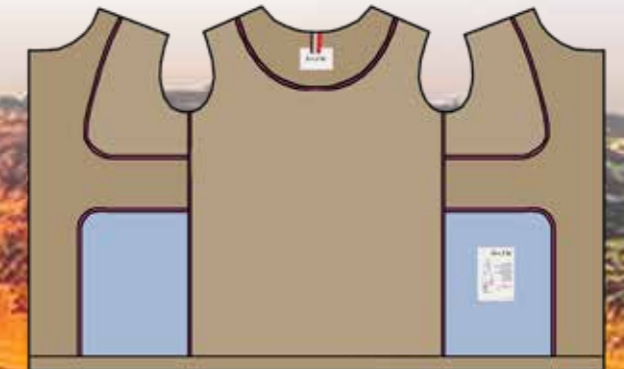
CODE STYLE-RIW191J
STYLE-VIOLET

CODE FABRIC-F0105
FABRIC- SURFACE TEK
COMPOSITION-69%CO 31%NY

SMS IS IN S SIZE

SIZE- XS S M L XL XXL

COTTON



COL: 057 LIGHT PIPE



COL: 063 PIQUANT GREEN



COL: 038 SAILOR BLUE



COL: 066 MILITARY OLIVE

COL: 057 LIGHT PIPE COL: 063 PIQUANT GREEN COL: 038 SAILOR BLUE COL: 066 MILITARY OLIVE

RHUNIK

CAPOSPALLA VESTIBILITA' COMODA, TASCHE A FILETTO, CAPPUCCIO CON GIOCO DI PASSAGGIO COULISSE E MANICHE RAGLAN. TESSUTO BATTUTO IN MISCHIA DI COTONE NYLON.

EASY FIT JACKET, WELT POCKETS, HOOD WITH DRAWSTRING EYELET PASSAGE EFFECT AND RAGLAN SLEEVES. COMPACT FABRIC IN A MIX OF COTTON NYLON.

CODE STYLE-RIW192J
STYLE-PENNY

CODE FABRIC-F0105
FABRIC- SURFACE TEK
COMPOSITION-69%CO 31%NY

SMS IS IN S SIZE

SIZE- XS S M L XL XXL

COTTON

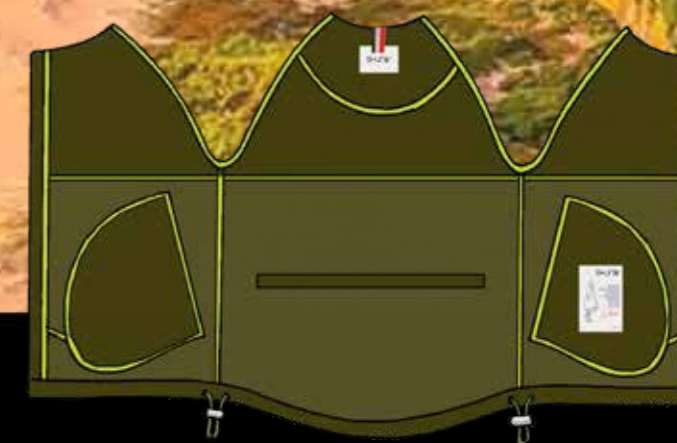
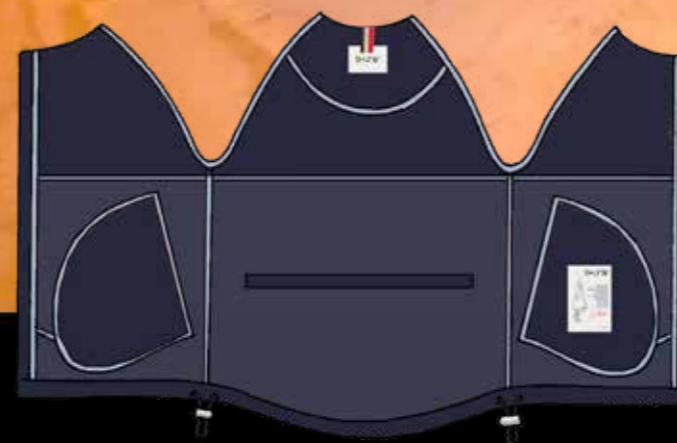
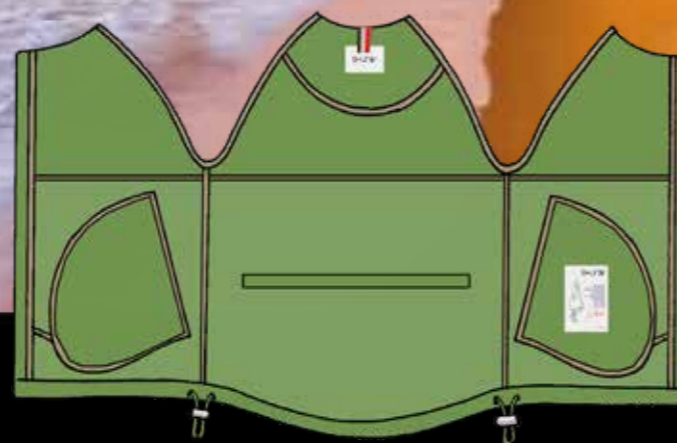
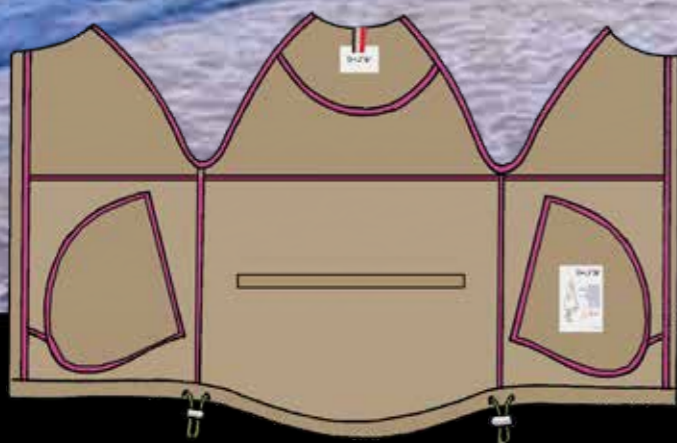


COL: 057 LIGHT PIPE

COL: 063 PIQUANT GREEN

COL: 038 SAILOR BLUE

COL: 066 MILITARY OLIVE



RiUNIK

CAPOSPALLA MEDIA LUNGHEZZA DALLA VESTIBILITA' REGOLARE. REGOLABILE IN LARGHEZZA SUI FIANCHI E IN VITA. TESSUTO BATTUTO IN MISCHIA DI COTONE NYLON.

MEDIUM LENGTH REGULAR FIT JACKET. ADJUSTABLE WIDTH ON SIDES AND WAIST. COMPACT FABRIC IN A MIX OF COTTON NYLON.

CODE STYLE-RIW193J
STYLE-FAYE

CODE FABRIC-F0105
FABRIC- SURFACE TEK
COMPOSITION-69%CO 31%NY

SMS IS IN S SIZE

SIZE- XS S M L XL XXL

COTTON



COL: 057 LIGHT PIPE

COL: 063 PIQUANT GREEN

COL: 038 SAILOR BLUE

COL: 066 MILITARY OLIVE



RiUNIK

GIUBBINO CORTO VESTIBLITA' CONFORTEVOLE. TASCHE CON ZIP E ABBOTTONATURA NASCOSTA, REGOLABILE IN LARGHEZZA SUL FONDO. TESSUTO NYLON LUCIDO DOPPIATO CON RETE.

SHORT COMFORT FIT JACKET. POCKETS WITH ZIP AND HIDDEN BUTTONING, ADJUSTABLE IN WIDTH ON BOTTOM. SHINY NYLON BONDED NET FABRIC.

CODE STYLE-RIW194J

STYLE-FLORA

SMS IS IN S SIZE

SIZE- XS S M L XL XXL

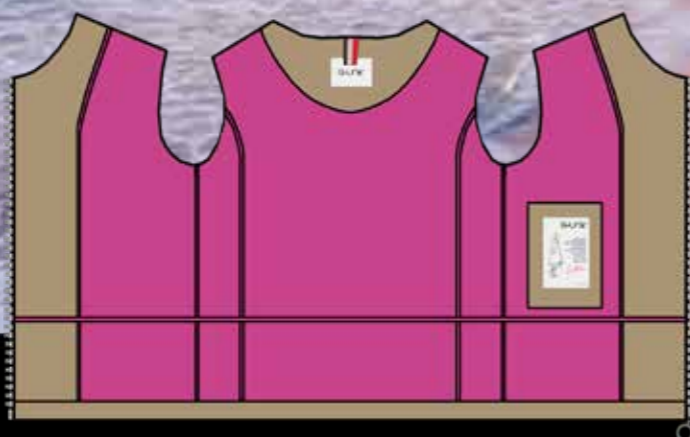
CODE FABRIC-F0107

FABRIC- TEK NET

COMPOSITION-100%NY



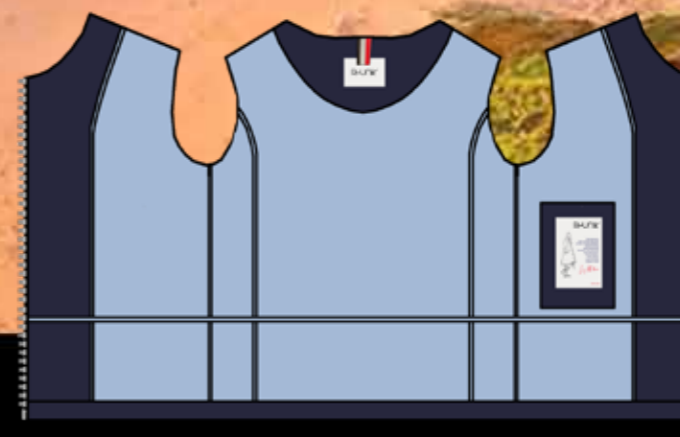
COL: 057 LIGHT PIPE



COL: 063 PIQUANT GREEN



COL: 038 SAILOR BLUE



RiUNIK



RiHUNIK

RiUNIK



RiHUNIK

**GIUBBINO CORTO VESTIBILITA' CONFORTEVOLE. TASCHE A TOPPA CON PATTI-
NE. REGOLABILE IN LARGHEZZA SUL FONDO E SULLA BASE DEL CAPPuccio.
TESSUTO RETE FULL PRINT DOPPIATA CON NYLON LUCIDO.
SHORT COMFORT FIT JACKET. PATCH POCKETS WITH FLAPS AND ADJUSTABLE
WIDTH ON BOTTOM AND ON THE BASE OF THE HOOD. FULL PRINT NET FABRIC
BONDED WITH SHINY NYLON.**

**CODE STYLE-ARIW6J
STYLE-TIARA**

SMS IS IN S SIZE
SIZE XS S M L XL XXL

**CODE FABRIC-F0108
FABRIC- PRINTED TEK NET
COMPOSITION-100%NY**



COL: 056 RASPERRY ROSE



COL: 056 RASPERRY ROSE

GIUBBINO CORTO VESTIBILITA' REGOLARE. COLLO A IMBUTO E DOPPIA TASCA.
TERMO NASTRATURE ESTERNE E ZIP TASCHE IN CONTRASTO COLORE. TESSUTO
NYLON TECNICO DOPPIATO E COMFORT.

SHORT COMFORT FIT JACKET. FUNNEL NECK AND DOUBLE POCKET. EXTERNAL
HEAT SEALED DETAILS AND POCKET ZIPS IN CONTRAST COLOUR. BONDED TECH-
NICAL COMFORT NYLON.

CODE STYLE-ARIW7J
STYLE-PAM

CODE FABRIC-F0106
FABRIC- DOUBLE SURFLEX
COMPOSITION-88%NY 12%EA

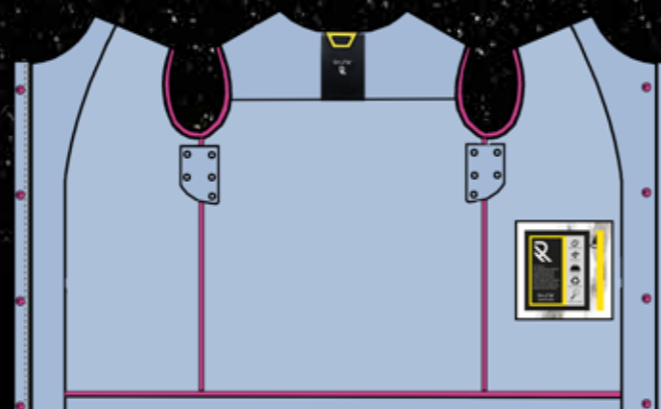
SMS IS IN S SIZE
SIZE XS S M L XL XXL

STRETCH



COL: 048 LIGHT BLUE POWDER

COL: 057 LIGHT PIPE



RHUNIK





T-SHIRT & POLO
T-SHIRT & POLO

RiHUNIK

**POLO VESTIBILITA' REGOLARE, LINEA DIRITTA. COLLO CLASSICO TENNIS E
MANICA SOPRA AL GOMITO. TESSUTO PIQUET DI COTONE STRETCH.
REGULAR FIT POLO WITH STRAIGHT LINE. CLASSIC TENNIS COLLAR AND
SLEEVE ABOVE THE ELBOW. COTTON STRETCH PIQUET FABRIC.**

**CODE STYLE-RIW196P
STYLE-KAT**

SMS IS IN **S** SIZE

SIZE- XS S M L XL XXL

**CODE FABRIC-F0067
FABRIC- 24/7 PIQUET
COMPOSITION-95% CO 5%EA**



COL: 111 WHITE

COL: 048 LIGHT BLUE POWDER

COL: 057 LIGHT PIPE

COL: 038 SAILOR BLUE

COL: 064 CITRUS

**T-SHIRT GIROCOLLO.
MAXI LOGO.VESTIBILITA' UNISEX
ROUND NECK COTTON T-SHIRT.
MAXI LOGO. UNISEX FIT.**

**CODE STYLE-RIU01T
STYLE-ANDY**

SMS IS IN L SIZE
SIZE - (S) (M) (L) (XL) (XXL) (XXXL)

**CODE FABRIC-F0066
FABRIC-24/7 JERSEY
COMPOSITION- 100%CO FOR 999 COLOUR
COMPOSIRTION FOR 021 COLOUR 95% CO 5%VI**



COL: 021 GREY MELANGE



COL: 999 BLACK

**T-SHIRT GIROCOLLO IN 100% COTONE.
LOGO A CUORE. VESTIBILITA' UNISEX
ROUND NECK T-SHIRT 100% COTTON.
LOGO ON BREAST. UNISEX FIT.**

**CODE STYLE-RIU02T
STYLE-CREE**

SMS IS IN L SIZE
SIZE - (S) (M) (L) (XL) (XXL) (XXXL)

**CODE FABRIC-F0066
FABRIC-24/7 JERSEY
COMPOSITION-100%CO**



COL: 111 WHITE

COL: 064 CITRUS

COL: 057 LIGHT PIPE

COL: 054 DANUBE BLUE

COL: 038 SAILOR BLUE

COL: 999 BLACK

COLOUR CARD SPRING SUMMER 2024

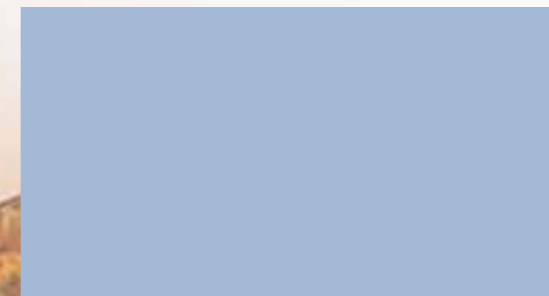
WOMAN COLLECTION



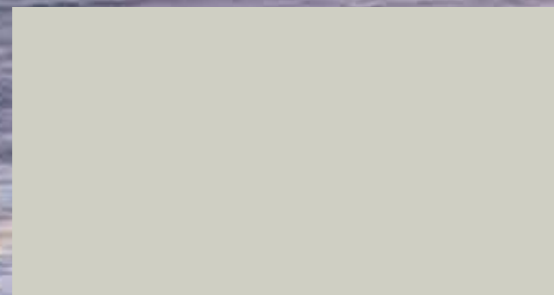
COL:111 WHITE



COL: 057 LIGHT PIPE



COL: 048 LIGHT BLUE POWDER



COL: 061 ROCK GREY



COL: 064 CITRUS



COL: 063 PIQUANT GREEN



COL: 021 GREY MELANGE



COL: 056 RASPBERRY ROSE



COL: 066 MILITARY OLIVE



COL: 038 SAILOR BLUE



COL: 999 BLACK



RiHUNIK